

www.komasco.com

KOMASCO
KOREA MARINE SUPPLY CO.,LTD



2 Introduction

Introduction 3

Your One Stop Supplier In Korea

Faith Begets Faith



Contents	05 Greeting
	06 General Outline
	07 History
	08 Organization
	09 Quality & Environment
	10 Why KOMASCO
	12 Business Outline
	28 Customer List
	29 Port Index
	30 WRIST SHIP SUPPLY

Greeting 15

Greeting

“We can do it”

With our firm belief that started off with only “We can do it!” we continuously tried to become a part of the new wind that is occurring in business, especially in Marine Business where most change is taken place.

We are very aware that our effort allows the customers to get familiar with us. Trust helps to raise our firm value, and that us being where the customers want us to be is a very simple fact. Because we know advisors and counsels given by customers are a big engine to grow our firm, we will listen to your sincere opinions all the time.

To create a firm culture with technology, creativeness, and no regret for customers, all workers in KOMASCO will do our best to satisfy customers with endless updated technology and new advanced management technique. Also, we will do our best for customers' service by not missing a single harbor in Korea.

Sincerely Yours

PRESIDENT JONG SOO JEONG



6 General Outline

General Outline

Location

- HEAD office: 1187-5, Choryang-3dong, Dong-Ku, Busan, Korea, 601-838.
- Yeongdo office: 4F, KOMASCO Bldg., 34 HaeYang-Ro, Yeongdo-Gu, Busan, KOREA 49000
- Tel: 82-51-466-5443
- Fax: 82-51-466-5440
- E-mail: komasco@komasco.com
- www.komasco.com

Capital-Stock

- 420,000,000 [US \$370,000]
- Establishment: May, 1990
- Representative: Jong Soo, Jeong

Company Overview

- Bank Reference
- The Korea Exchange Bank, Dongkwang-Dong
- The First Bank, Buisson-Dong
- The Kookmin Bank, Soosin-Dong

History 7

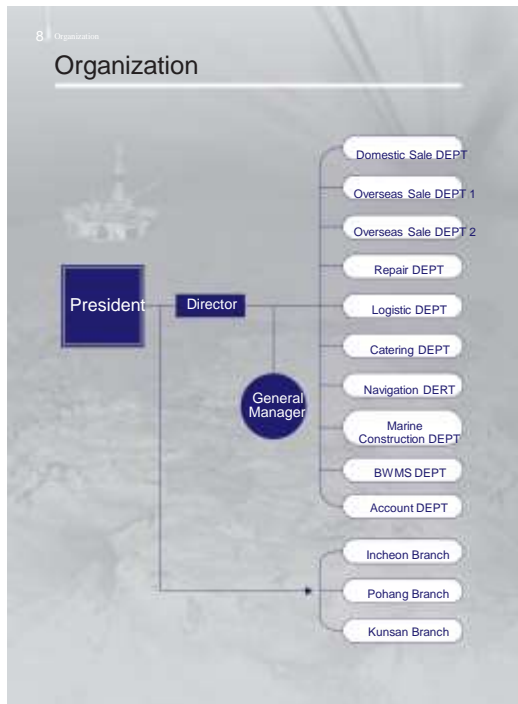
History

- | | | | |
|------|--|------|--|
| 1990 | 05 Established Company [Busan&Seoul] | 1997 | 06 Contracted as a sales agent with KISWIRE CO., LTD. |
| | 07 Established Masan Branch. | 10 | Built New Head Office and Warehouse. |
| | 08 Established Ulsan Branch. | 1998 | 07 Contracted as a sales agent with WILDEN PUMP. |
| | Established Pohang Branch. | 2000 | 07 Certified by ISO 9002 [DNV]. |
| | Established Kwangyang Branch. | 2003 | 05 Registered a member of SHIPSERV. |
| 1991 | 03 Registered member of ISSA. | | 06 Certified by ISO 9001 [DNV]. |
| | 04 Established Daesan Branch. | 2004 | 01 Registered a member of IMPA. |
| 1992 | 02 Established Donghae Branch. | 2010 | 01 Contracted as Representative in Korea of EMS Ship Supply [Elzon Group]. |
| | Established Pyungtaek Branch. | 2012 | 08 Certified by ISO 9001 [EC]. |
| 1993 | 04 Contracted as a sales agent with DSR | 2013 | 08 Certified by ISO 14001 [EC]. |
| | 06 Contracted as a sales agent with DAEYANG ELECTRIC CO., LTD. | 2014 | 01 Became a member of MARCAS. |
| 1995 | 01 Registered to Korea Shipping Agencies Association | 2015 | 04 Moved to NEW office [KOMASCO BLD.] in Yeongdo. |
| | 03 Contracted as a sales agent with WOOLN FINE CORP. | 2016 | 02 Contracted as a distributor in KOREA with GAC SHIP SUPPLY. |
| | 04 Contracted as a sales agent with KBC BEARING. | | 06 Contracted as a BWMS sales agent with SAMS HEAVY INDUSTRIES. |
| 1996 | 01 Contracted as a sales agent with DOOJIN FIRE HOSE CO., LTD. | | 06 Contracted as a Exclusive agent with University. |
| | Contracted as a sales agent with SHELL. | | 08 Started to certify with NSF [ongoing]. |
| | 02 Contracted as a sales agent with DONG YANG ROPE CO., LTD. | 2017 | 10 Contracted as a sales agent with UNIVER. |



8 Organization

Organization



Quality & Environment 9

Quality & Environment



10

Why KOMASCO?

Why KOMASCO?

Why should I choose KOMASCO? And how can I realize it?

A

Stability

We have been in this field over 25 years with good reputation and have over 300 customers in the world.
40 personnel of very experienced our staffs will provide the best service with you & your vessels.
All of our customers have been enjoying our service for a long time.
Also we scored BB+ grade credit from famous credit-rating agency in Korea.

B

Quotation

We established B-TO-B system with our suppliers in local market to source items with best price & best quality for the first time in Korea.
The system make suppliers in local market to compete with the lower price & high quality products.
This able us to prepare our quotation accurately, speedy with the best price & high quality products.

C

Delivery status

Once you place the order to us, you can check the status of your good order visiting our web after log-in at ORDER STATUS

D

Feedback

Wherever you would be in the world, Visiting our web-site enable you to check how your good order delivery.
When you receive our goods, please send us the feedback to the vessel.
then the vessel can evaluate our service & products.
All questionnaire will have vessel's evaluation, we enclose it to the invoice for your consideration.
It makes all parties to know the result of the delivery and keep us to maintain good service.

E

Worldwide Net-work

As a member of WRIST Ship Supply [Korea Representative of WRIST Ship Supply]
We have world-wide network, so we can provide our service & necessary action at any where in the world.

F

Logistic Service

We operate our own forwarder. So we can provide logistic service with you for your good spare parts.
We handle ship's spare parts from overseas for the delivery to the vessel in Korea.
Also we can send your good orders and off landed items to overseas with the most economical way.

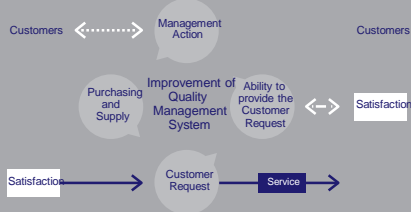
Why KOMASCO?

Why KOMASCO?

	KOMASCO	OTHER SUPPLIER
STABILITY OF FINANCES	O	△
B TO B SYSTEM	O	X
ORDER STATUS SYSTEM	O	X
SUPPLIER QUESTIONNAIRE	O	X
FEEDBACK	O	X
WORLDWIDE NETWORK	O	X
LOGISTICS(OUR OWN FORWARDER)	O	X
QUALITY SYSTEM (ISSA QUALITY / ISO 9001)	O	△
ENVIRONMENT SYSTEM (ISO 14001)	O	△
COLD CHAIN SYSTEM(ISO 22000)	O	△

12 Business Outline

Business Outline



Business List

- General Marine Store & Equipment Supply
- Provision & Bonded Store Supply
- Marine Spare Part Supply
- Repairing & Inspection
- Chart / Publication / E-Navigation System
- Marine Construction
- BWMS(Ballast Water Management System)
- Logistics
- New Building Initial Stores
- Offshore Technical Stores / Catering
- Agency Services

Business Outline 13

General Store Supply



14 Business Outline

General Store Supply



Business Outline 15

Provision & Bonded Store Supply



Marine Spare Part Supply

© Main Engine Spare Parts

• STX Engine A/S & Part sales



- STX-Man B&W: 2-Stroke
- STX-Man B&W: 4-Stroke
- STX-Pielstick
- STX-Niigata
- STX-Cummins
- Technical Service
- Radial Flow Turbocharger
- Axial Flow Turbocharger



• Doosan Engine A/S & Part sales



- DOOSAN-Man B&W: 2-Stroke
- DOOSAN-Man B&W: 4-Stroke
- DOOSAN-W. Nsd Sulzer: 2-Stroke
- Measutal
- Retrofit Service



• Hyundai Engine A/S & Part sales



- Hyundai-Man B&W: 2-Stroke
- Hyundai-Man B&W: 4-Stroke
- HiSEM Engine
- Propeller

© Machinery Part



- Sangong Co., Ltd.**
- Ship's Side Scuttles & Windows
 - Accommodation Ladders And Winch
 - Wharf Ladder
 - Oil Purifier



- Hanyoung Engineering Co., Ltd.**
- Oil Water Separator
 - Sewage Treatment Plant
 - 15ppm Bilge Alarm
 - Bilge Pump & Sludge Pump



- Kosco Co., Ltd.**
- Bums (Ballast Water Management System)



Chart / Publication / E-Navigation System



GLOBAL NAVIGATIONS SOLUTIONS

- Navigation management and compliance are an essential part of ship management.

For the shore-based team, they are often very admin intensive and, on board tasks are often highly repetitive making them prone to human error. In today's world, few can justify such inefficiencies or avoidable costs.



At GNS, we specialise in providing safe, compliant, efficient and cost-effective navigation solutions for commercial shipping that make our customers' lives easier. We support and help protect more than 20,000 vessels and many of the world's biggest shipping names worldwide.



- GNS is the world's Largest Distributor of UKHO
- GNS has Branches in 20 Countries in the World
- You can use all the Product and Service of GNS Company with GNS Korea



PRODUCT

- Chart and Publications
- IMO, ITU, ICS, WHO related Publications
- Sailing Equipment
- Log book and Each Flag of Each Country
- Electronic Navigation Chart and Digital Pub
- Voyager (Notice To Mariners Digital manage service)



SERVICE

- You can use GNS GLOBAL EXPRESS SERVICE
- Voyager Service that 5,000 ships used in the world
- You can use a Trial version and Charged Service
- AUTO SUPPLY SYSTEM (Manage chart and Pub.)



Repairing & Inspection



Engine Services

- We Provide Complete Services for Engines and Related Systems, For Man B&W, Sulzer and Other Makers of Engine.
- Overhaul of Engine, Piston, Liner, Cylinder Cover, Fuel Injection Pump and Nozzle Etc.
- Reconditioning of Cylinder Covers, Piston Crowns and Rods, Exhaust Valves & Seats, Relief V



Electrical & Automation Services

- We Can Cover Your Entire Work Scope Including Electrical and Pneumatic Equipment, Automation, Repair, Maintenance, Troubleshooting and Upgrades.
- Repair & Maintenance of Items As Follow: Motor, Generator, A.V.R., Navigation & Gmdss Equip
- Crane & Winch Control, Auto Control System, Pneumatic System.
- All Kind of Electrical Trouble Shooting.



Structural Welding

- Our Experienced Welding Specialists Are The Leading Force In Carrying Out The Structural Repairs In The Marine Industry.
- All Structural Welding Repairs Are Carried Out In Accordance With Classification Societies And Closer Cooperation With Manufacturer Specific Procedures.
- All Our Welding Personnel Are Certified By The Leading Shipping Business Classification Society
- Bedplate, Gear Column, Frame, Air Receiver Crack Repair
- Engine Room and Deck Piping System Renewal or Modification
- Hatch Cover and Water Tight Door Crack Repair
- Ballast Tank, Tank Top and Hull Steel Plate Repair Etc.



Underwater Repairs

- We offer a full range of underwater repairs and inspection
- Underwater Cleaning, CCTV Inspection, Propeller Polishing and Other Underwater Works.



Safety Equipments

- Life Raft, Life Boat and Fire Fighting System Etc.



Calibration Service Listed Items

- Portable Gas Detectors
- Fixed Gas Detection System
- Breathalyser
- Self-Contained Breathing Apparatus
- Escape Emergency Breathing Devices
- Chemical Protection Suits
- Temperature Measuring Instruments
- Pressure Measuring Instruments



DIGITAL PRODUCTS



Voyager

- It is the program that can print the block and tracing of Notice To Mariner.
- Manage ENC, digital product and paper chart / publication on same time.
- (Send the inquiry to us if you interested Free trial service of Voyager)
- It would be give the most reasonable price if you use it with our Bundle service.
- Easier to use and install, reduces operator error, saves time on low value tasks and protects from navigation related observations and deficiencies.

Electronic Navigation Chart

- GNS give you the most reasonable price that calculated by self analysis system (It called 'Bundle service')
- Bundle service gives you much competitive price for using ENC.
- (It can be calculated by demand of user)
- Voyager + Bundle package give you the most reasonable price

ADP & e-NP

- ADP can be update by Voyager by e-mail.

SWITCHING TO DIGITAL

- If you would like to know more about our 7 step programme, please call any of the office listed or download our white paper from: www.gnsworldwide.com/support

Marine Construction

Overview

- PLGR is the work process which remove the oceanic contaminations (ropes, wires, nets etc.) in the route before laying the submarine optical cables and help the cable lay safely in seabed, and also helps the laying process quality enhancement when Plough and ROV laying and protection the laying equipments.

Description

- The grapnel spread consisted of many piece grapnel train complete with running line monitor to record cable tension and payout. A full grapnel route survey package was also mobilized onto the vessel. The grapnel train was recovered and deployed using the vessels crane and deck tugger winch. Grapnel train length was adjusted throughout runs to account for water depth and seabed composition changes. Line tension was continually monitored throughout grapnel run operations and the train periodically recovered to deck to check for and clear debris.

Service

- PLGR/RCC work for international submarine optic cable project upto water depth 1,000 meter.
- support for barge positioning and navigation
- offshore towing service

Work Record

No	Project name	Customer	Contractor	Project area	duration
				Scope of work	
1	Hipon project	Korea Government	KT Submarine	PLGR/RCC and continuous tension monitoring for L&S7m PLGR Route: Busung T-5	10nd MAY 16 23rd MAY 16

PLGR/Route Clear Experience



Barge & Towing Experience



No	Project name	Customer/ Contractor	Project area Scope of work	duration
1	Mulsansa Sub Project Barge & Towing shipping	Chevron	Busan/Masan/Busan-Geje DBME shipyard Engine, Thrust Pump, Propeller and etc	Jul 14 Jan 15
2	Rolla Royce Marine Barge & Towing shipping	RRM	Masan/Sacheon-Masan/Usan Engine, Propeller, Crank shaft and etc	Aug 13 Jul 14
3	Various items Barge & Towing shipping	SH	Masan-Geje SH shipyard Masan/Usan-Gunsan Hose Reel, Engine, Thrust Pump, Propeller and etc	Apr 13 Mar 14
4	Petrofac SC Turkmen Gas Plant Barge & Towing shipping	Petrofac	Masan/Usan-Gunsan Cooker, Power Injection and etc	Jun 12 Jul 14
5	KBR Skids LNG Train II Barge & Towing shipping	KBR	Masan/Usan-Gunsan Cooker, Propeller and etc	Mar 13
6	Enesco Oilship Barge & Towing shipping	Enesco Inc	Busan/Masan-Geje SH shipyard Rider, BOP, Flush water, Sludge and etc	Mar 10 Feb 15

Equipment List

No	Description	Capacity	Unit	Quantity
1	PURIT 600 Offshore pump		Set	2
2	Type A&B prongs sliding grapple grapnel	CW 9.5T, green pin safety low shackle	Set	2
3	swivel C/W connecting Link each end	20mm GR80	Set	4
4	Half Coupling	Grade 80 20mm	Set	8
5	Running Lin Tension meter	RL-05, 10ton	Set	1
6	Navipod system		Set	1
7	DGPS		Set	1
8	A frame	10ton	Set	1
9	Wirerope	6x36+WRSC	Set	1

1. Not representing the accurate work scope or performance of the report.
2. General: The responsibilities, conflicts, timing, and other key to remove the contaminations in the route.
3. Scope: cover the operation of the marine (Grapple) ship.
4. Volume: The equipment makes shipping and collecting of Grapple and contaminations away.

BWMS(Ballast Wamgement System)

Samsung Ballast Water Management System

PURIMAR™, Samsung Ballast Water Management System is a safe and eco-friendly system to meet IMO's regulations, as it effectively eliminates organisms harmful to ecosystem and underwater environment.

At the same time, it reduces active materials used in the process of sterilization process to the harmless level for environment and discharges them thereafter.

Why Samsung PURIMAR™ ?

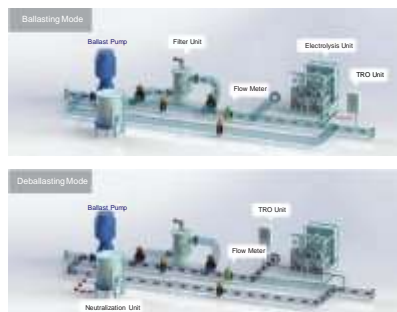
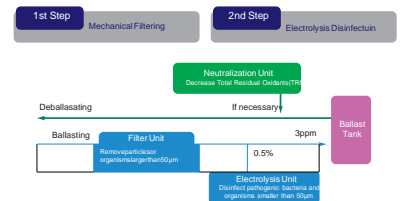
Space-saving design	Space optimization, Small footprint and easy installation
Non toxic by-products	Non hazardous material to be handled or stacked on board
Anti-Corrosion & Coating Protection	No corrosion problem in ballast tank and pipe
Cost saving	Low power consumption & minimal maintenance
Automatic operation	User-friendly, optimized system as well as unified & total operation
Global support	Qualified world wide service network & single service contact

PURIMAR™ is the perfect system and optimal solution taking account of customers' convenience first with integrated control through SSAS and establishment of worldwide A/S network, as it not only contains optimal installation solutions by ship type but also it realizes maximization of space utilization through modularization even in existing ships where installation is limited, and it is possible to operate the system economically utilizing the low-power treatment method which innovatively saves power consumption by treating a portion of the ballast water, differently from other methods which treat the whole ballast water.



BWMS

Process



Customer List

© Domestic



© Overseas



Port Index



Country	Port name	Distance (km)	Supply Lead time (days)	Deliveries				Services				Storage capacity		
				General cargo	Marine supplies	Chemicals	Oil Port	Refrigerated	Safety	Waste disposal	Special handling	Free zone	Free port	Bonded
Korea	Busan	0	★★★	✓	✓	✓	✓	✓	✓	✓	✓	✓	✓	✓
Korea	Incheon	40	★★★	✓	✓	✓	✓	✓	✓	✓	✓	✓	✓	✓
Korea	Musan	53	★★★	✓	✓	✓	✓	✓	✓	✓	✓	✓	✓	✓
Korea	Tongmyong	113	★★★	✓	✓	✓	✓	✓	✓	✓	✓	✓	✓	✓
Korea	Kobe	133	★★★	✓	✓	✓	✓	✓	✓	✓	✓	✓	✓	✓
Korea	Sancheong	132	★★★	✓	✓	✓	✓	✓	✓	✓	✓	✓	✓	✓
Korea	Haeundae	162	★★★	✓	✓	✓	✓	✓	✓	✓	✓	✓	✓	✓

WRIST SHIP SUPPLY

One-Stop-Shopping

- We stock just about everything and deliver just about everywhere
- Full service provider including handling of owners goods, provision management, shipping, airfreight and related marine services
- Supply dynamics
- one known contact covers your units worldwide



Our Way of Thinking

Vision
We are recognised for making our customers' life at sea better

Value
• Hard working
• Customer orientation
• Winning attitude

Competencies

- Key Account Management
- Scope of offices
- Global ERP/IT platform
- Global supply chain



Brand promise
Whenever - wherever
• The global supplier
• Local excellence
• Expert care/crew care

Global Footprint 2016



Your Trusted Partner

- Global presence - local excellence
- Experience in the business
- One-stop-shopping network
- Newbuilding packages
- Economies of scale - key to purchasing improvement
- Global frame agreements
- Accreditation
- Uniform policies and procedures worldwide

What's in it for you

- Global reach
- Uniform quality worldwide - local flexibility
- Fast response time (EDT)
- Volume scale prices
- Global assortment
- 24/7 availability
- Transparency/reporting tools



KOREA MARINE SUPPLY CO.,LTD

HEAD office: 1187-6, Choryang 3dong, Dong-Ku, Busan, Korea, 601-838
Yeongdo office: 4F, KOMASCO Bldg., 34 Hae Yang-Ro, Yeongdo-Gu, Busan KOREA 49000
Tel: 82-51-466-5443 Fax: 82-51-466-5442
E-mail: komasco@komasco.com www.komasco.com